

Super Yacht

international



CODECASA 43 GIOIA

ON BOARD:

CODECASA 43 GIOIA
CUSTOM LINE 50
ALIA YACHTS LIMERENCE
YYACHTS Y8
COLUMBUS ATLANTIQUE
47 ACQUA CHIARA

PROJECT&DESIGN:

BENETTI PROJECT VESTA
NAUTA DESIGN PROJECT VELOR

SHIPYARD:

150 YEARS OF LÜRSSEN
CHEOY LEE SHIPYARDS,
150 YEARS OF INNOVATION

DESIGNER:

CAMAL MARINE

n. 87 - Autumn 2025 - Euro 8,00 - US \$ 16,50 - £ 9,99 - P.I. 01/09/2025



Ares Yachts Atlas

The Antalya-based shipyard ARES Yachts has released new renderings of its latest 54-metre explorer superyacht concept, ATLAS, which was first unveiled in October last year.

With a volume just below the 500-GT threshold, ATLAS' exterior lines are from the drawing boards of the Italian design studio Hot Lab - part of the Viken Group - with naval architecture by the Dutch team of Van Oossanen Naval Architects and an interior customisable to the needs of the owner.

"We are thrilled to showcase more details of our latest collaboration with Hot Lab and Van Oossanen, 54-metre Atlas - comments Piraye Şahinkaya Orhun, Yacht Projects Director of Ares Yachts - this explorer yacht embodies our commercial and naval heritage in her design, whilst firmly keeping in mind the practical needs of today's adventurous owners."

A true go-anywhere superyacht which boasts the extended range of approximately 5,000 nautical miles and speed of over 16 knots, Atlas

presents a powerful yet sophisticated exterior, blending explorer yacht functionality with superyacht refinement.

One of the most distinctive features of Atlas' design is her mezzanine bow structure. Replacing the conventional foredeck, this area is split into multiple levels, forming a private outdoor retreat complete with spa pool, accessible directly from the owner's suite.

The owner can wake up to the open sea, step out onto a private terrace and enjoy a morning swim with panoramic ocean views. The design redefines the master suite, marrying exclusivity with a direct connection to the natural world.

Her four additional guest suites also benefit from direct access to the beach club, thanks to the location of the engine room forward. A crew of nine is housed across five cabins to provide the best superyacht guest experience. The aft area on board Atlas is an unconventional beach club, transforming



TECHNICAL DATA

L.O.A.:	m 54.00
Beam:	m 8.70
Draft:	m 2.10
Gross Tonnage:	499 GT
Materials:	Steel&Aluminium
Max speed:	17 knots
Cruise speed:	11 knots
Range @ 10 knots:	nm 5.000



into a true welcoming lounge, extending outwards on three sides and creating an expansive, open-air living space.

Fold-down terraces on both sides increase the deck size, immersing guests in their surroundings through close proximity to the water. The space is a social hub, complete with cocktail bar, sunbeds and relaxed lounge seating.

"The effect of this is a resort-like atmosphere – comments Enrico Lumini, Design Director and co-founder of Hot Lab – where the guests on board can move seamlessly between socialising, on-water activities and relaxation."

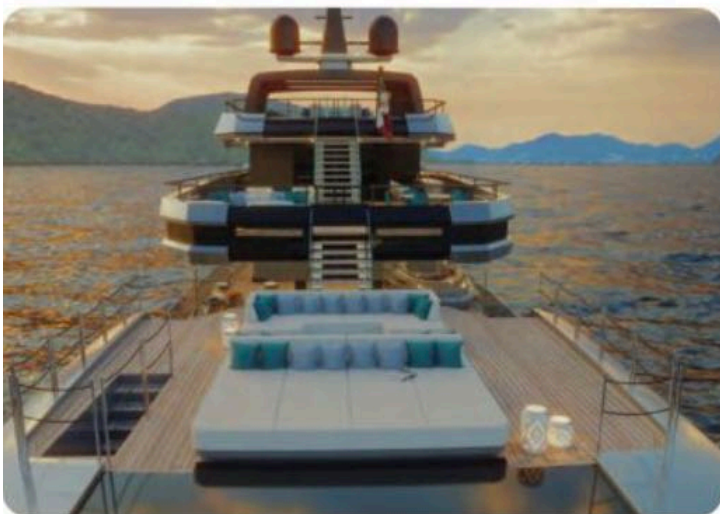
"The overall deck layout prioritizes flexibility, openness, and a seamless connection with the sea – explains Antonio Romano, commercial and marketing director of the Viken Group and co-founder of Hot Lab – whether it's hosting an elegant dinner under the stars or launching straight into an adrenaline-fueled water adventure, every space is crafted to elevate the yachting lifestyle."

Atlas' eye-catching looks have adventure and performance at their core. Her design is underpinned by a Fast Displacement Hull Form (FDHF) developed by Van Oossanen Naval Architects, now accepted as the industry standard for efficiency at low and high speeds. Notably too, Atlas could also be specified with a hybrid propulsion solution and other elements such as solar panels in order to reduce its emissions footprint.

"Atlas is not just about looks – Lumini highlights – she's built for adventure, offering a rugged yet elegant interpretation of contemporary yacht design. The layout prioritizes efficiency and accessibility. Every aspect of the design is geared toward an owner who is ready to explore beyond the beaten path." Atlas' design includes a spacious tender garage with side-launch system for easy deployment of a large primary tender, perfect for island hopping and exploring remote areas.

Atlas carries a wide variety of toys, including jet skis, seabobs, paddleboards, diving gear and specialized equipment such as e-foils and submersibles. Her off-grid potential is enhanced by her helipad capability.

For further information aresyachts.com



ON BOARD

COLUMBUS ATLANTIQUE

By Daniele Carnevali

*Mediterranean elegance and
harmony with the sea in the new
Columbus Atlantique 47.*



ACQUA CHIARA



TECHNICAL DATA

LOA	47.00 m
Max beam	9.10 m
Draught full load	2.40 m
Gross Tonnage	499 GT
Engines	2 x CAT C32 Acert
Max speed	15.5 knots
Range	3,400 nm @ 12 knots

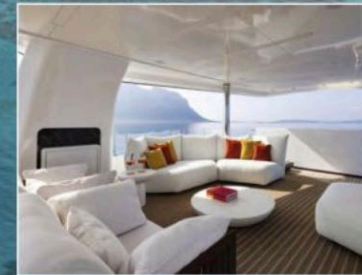
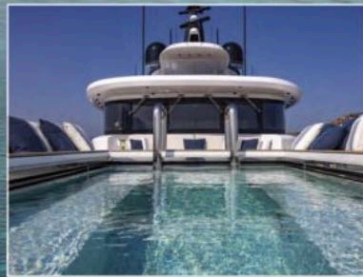


Columbus Yachts, part of Palumbo Superyachts, introduces Acqua Chiara, the new 47-metre Atlantique line yacht, a project combining elegant design, uncompromising liveability and a constant connection to the sea. Designed by Hot Lab inside and out, with naval engineering developed in-house, Acqua Chiara is intended for an owner who embraces sailing as a complete lifestyle, blending aesthetics, functionality and absolute comfort.

Her soft, flowing exterior lines broaden amidships before narrowing towards bow and stern, creating a dynamic silhouette even when at anchor. The steel hull ensures robustness and stability, while the aluminium superstructure reduces overall weight, enhancing efficiency and performance. With a 910-metre beam and a 499 GT volume, spaces are generous, bright and designed for maximum usability. One of the Atlantique line's signature features is the multi-tiered aft layout, creating a seamless link between indoor and outdoor areas. The main deck hosts a sheltered dining area; the intermediate level offers a large lounge with infinity pool and fold-out balconies; the lowest tier features a swim platform just 50 cm above the water, fitted with a transformer platform for easy sea access and water toy handling. The interiors, conceived by Hot Lab to balance luxury and practicality, feature high-end materials and contemporary finishes: Sicis mosaics, Vetrice surfaces, fine wood veneers and brushed dark metal details. Furnishings combine bespoke

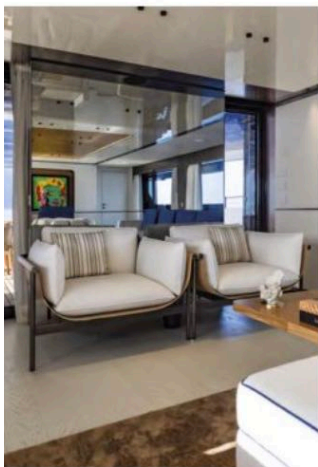


94 ON BOARD *S*

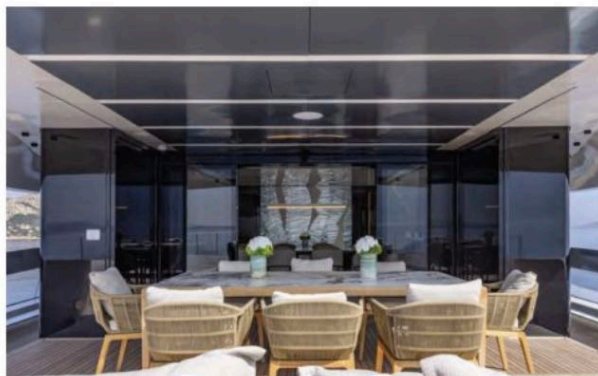


COLUMBUS
ATLANTIQUE *S*





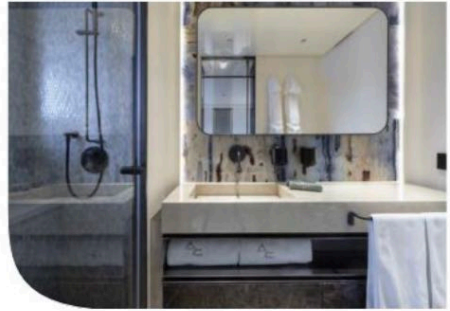
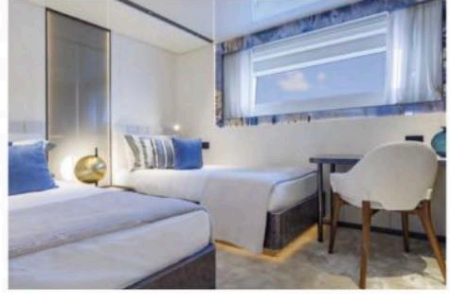
creations with design icons from Fendi Casa, Minotti and Bonaldo. Forward on the main deck, the full-beam owner's suite is a private retreat including sleeping area, lounge, walk-in wardrobe and a marble-clad bathroom with hammam shower and free-standing bathtub. The upper deck hosts a panoramic lounge convertible into a cinema, a formal dining table for 12 guests, and a forward outdoor space with pool and sunpads. The sun deck is entirely dedicated to relaxation, featuring a fully equipped bar, expansive sunbathing areas and a shaded conversation zone beneath a hard top. On the lower deck are two VIP doubles and two twins, all ensuite and finished with premium materials. Crew quarters accommodate up to eight, with comfortable cabins and a dedicated mess,



COLUMBUS ATLANTIQUE



COLUMBUS ATLANTIQUE



ensuring efficient operations and guest privacy. Powered by twin Caterpillar C32 engines delivering 1,350 hp each, Acqua Chiara reaches 15.5 knots at top speed and offers a range of 3,400 nautical miles at 12 knots. Her optimised hull and Columbus' construction expertise ensure smooth cruising even in challenging conditions. The garage carries a 5-metre tender, a rescue tender, two jet skis and a selection of water sports gear. Managed for charter by Fraser Yachts, Acqua Chiara embodies Columbus' philosophy: meticulous attention to detail, extreme customisation, cutting-edge technical solutions and constant dialogue between design and functionality. She is the perfect synthesis of Mediterranean superyacht DNA and the timeless elegance of fine naval craftsmanship.